



SIMPLY SOUP

Great team, great soup,
great atmosphere!!

**Thursdays
12pm**

All welcome.
Spread the word!

If you want to volunteer or
need more information
please phone
**Belfast Salvation Army
323 8257**

WHAT'S UP in Belfast

**October/
November**

Neighbourhood
Week

Bowling Season
Starts

DAYLIGHT SAVING
starts midnight
Sunday
29th September

CHURCH NOTICES

St David's Anglican Church
831 Main North Rd, Belfast
Sunday 9.00am

St Silas Anglican Church
Main North Road, Redwood
Sunday 10.30am
Rev. Joanne Latham

Christchurch North Elim
803 Main North Rd, Belfast
Sunday Service 10am
Pastor Stewart McLellan

Belfast Salvation Army
794 Main North Rd, Belfast
Sunday Worship 10am
Pastors Neil & Gill Waugh

ROTARY CLUB Belfast/Kaiapoi

We meet 5.30pm every Tuesday
at the Belfast Rugby Football Club
Restaurant for fellowship and a
meal. Belfast Rotary recently
merged with Kaiapoi and we are
keen to increase our membership
so if you are interested to become
a Rotarian in a worldwide
organisation please contact our
Recruitment Committee: **Craig
Wright:** 327 2735, EM
wrightplace@ihug.co.nz. **Merv
Wells:** 323 4313, EM merv.wells@xtra.co.nz; **Graham Robertson:**
323 9495, EM gbrobertson1@gmail.com

EXPERIENCE HERITAGE WEEK

**Belfast Historical
Memorabilia Display**
Sheldon Park 10 Year Anniversary
1913 – 2013

Sunday 20th October 1-4pm
Sheldon Park
Main North Rd, Belfast

As part of our community
celebrations in Belfast, we invite
you to come and view our
wonderful display of local history
and treasures especially Sheldon
Park history, come along and be
part of our heritage event. We
have disability access and all
donations greatly appreciated.
Contact Ivan Hibberd on 323
8769 for further information.

ST DAVID'S - BELFAST

829 Main North Road
Wednesday Service 10.am for
morning tea followed by an
informal service in the lounge.
Come and join us for singing,
discussion, prayer and communion.
All welcome. *Thursday Study Group*
10.am and Craft Group 1pm -
Sunday service 9am except the first
Sunday each month. Phone office
352 1366 for details or the minister
Joanne Latham - **352 6263**


Belfast Community Network Inc
Supporting our community as it grows
Tautokohia to Iwi Kainga i Tana Tipuranga
OFFICE HOURS: 9am to 4pm Monday – Friday. **PH:** 323 9731
POSTAL: P O Box 76126, Northwood, Christchurch, 8548
EM: info@belfastcommunitynetwork.org.nz
www.belfastcommunitynetwork.org.nz

BELFAST RESIDENTS' ASSOCIATION

"Letting **you** know what's happening in **your** community."

BELFAST

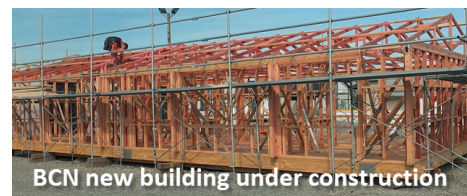
*Community
Newsletter*

October/November 2013

Kia ora koutou

We are heading towards Christmas far too
quickly!

I'm sure you have seen our new billboard on
the corner of Johns and Main North Roads
the BCN are pleased to support this
campaign and to support the message that
violence is not acceptable in any form in our
community. It is OK to ask for help and it is
OK to get involved! For further information
go to www.areyouok.org.nz or phone 0800
456 450. It is very significant that Sir Mark
Solomon leads the message in our
community. Thank you to the Belfast
Community Trust for funding this message.



BCN new building under construction

The BCN is thrilled with the development of
our facility that is being built off site, the
roof will be going up next week on the first
section and then the second section of our
kitchen, toilets and hall will begin and we
are still hopeful that it will be transported
on site near the end of the year – lots of
fingers crossed!

The BCN office is now situated at Belfast
Rugby Club as the old classrooms that we
have been based in at Belfast School will be
demolished during the school holidays. A
huge thank you to Peter Simpson and the
Belfast School Board of Trustees for the
amazing support they have given our team
to continue our work since May last year.
We will not be holding our usual
community event this year as we have sadly
lost the funding for the event but hope to
have a great event in March next year.
We will be launching our Welcome Bags at
the Northwood Fair on 3 November. The
CPIT students have been amazing and we
have some wonderful information from our
local groups and business people to share
with people when they move into our
community.

Belfast Pool keys will also be available soon
please contact the school on 323 8849 or
keep an eye on our website and Facebook
page to keep up to date.

Lynda Goodrick - Agency Manager



SUPPORT US – www.facebook.com/pages/Belfast-Community-Network



NEW BUILDING

Lynda, BCN Agency Manager, standing in her future office.



OSCAR JUDGES

Judging our OSCAR children at our local talent quest in the July 2013 Holiday Programme.



The old van got trashed



BCN NEW VAN

Lynda and Jean (in the new van) with Tony from Stadium Cars.

BELFAST OSCAR PROGRAMMES

Before School Programme

7.00am - 8.30am \$8 per session

After School Programme

3.00 - 5.30pm \$13.50 per session

School Holiday Programme

8.30am-5.30pm \$35 per day

OCTOBER HOLIDAY PROGRAMME

30 September - 11 October

Download our Information for Families, Enrolment and Booking forms from our website. For details phone Lizi on **323 9731** or check www.belfastcommunitynetwork.org.nz

WISE UP COURSE - BELFAST

An eight week course for children 6-12 years old. Runs each term 3.30-5pm during each term. We will be teaching skills for everyday life. We look at how to recognise feelings and emotions and explore new and different ways of dealing with these. Children also learn how to work in a team, handle peer pressure and keep themselves safe. For further information please contact Tineke Walters, Chch Methodist Mission. Ph **375 1470** ext 844 or visit www.mmsi.org.nz

ST JOHN SHUTTLE TO HOSPITAL

Are you a Belfast resident and need to get to a health related appointment in Christchurch? Please ring Citizens Advice **0800 383 373** the day before to book a seat. No wheelchair access.

BELFAST ACC

20% of injuries that happen in or around the home are on steps and stairs. For further information visit www.homesafety.co.nz

MAINLY MUSIC

For ages 0-5 runs at Christchurch North Elim, 803 Main North Road, Belfast - Mondays from 10am - 11.00am. Cost is \$2 per child or \$3 per family. Ph **323 7212**

KUNG FU BEGINNERS CLASSES

Tuesdays and Thursdays 5:45pm at Belfast School Hall, 700 Main North Road, Belfast. Email belfastkungfu@xtra.co.nz or phone 0276816555.

CATAPULTING CUBS

Preschool gym circuit held at Christchurch North Elim - 803 Main North Road, Belfast on Thursdays 10am-11am during term time. For more information contact Belinda **022 079 9469** or Tracey **323 7212**

EXPRESSOO YOUTH

Thursdays 2.30pm - 5.30pm except school holidays - 1a Harewood Road. Lots of energetic and low key activities. Call Mike Brown **354 9381** Papanui Youth Trust Development

WEEKLY ACTIVITIES

Bowls, dancing, badminton, table tennis, exercise group, choirs, preschool music, Youth Group - all at St Silas Redwood. Ph **352 1366**

PAPANUI HIGH SCHOOL

Enrolments open for Adult and Community Education for Term 4 Courses beginning from week of 21 October. Ph **352 0701**

REAL STEPS TRUST

For therapeutic workshops, courses and seminars, please contact Karen **323 7837** for more information

BELFAST RESIDENTS' ASSOC

We meet at the Belfast Bowling Club, Sheldon Park 7.30pm on the last Monday of each month. For more information please contact Gavin on **323 8283**.

PLUNKET PLAYGROUP

Friday morning playgroup now runs from the **Belfast Plunket Rooms in Belfast Road** during school term. Further information please phone Janine **323 4556**

BELFAST FRIENDLY CLUB

Did you know that the Belfast Friendly Club has been operating for over 36 years? For further information please ph Marion **323 8296** or Myra on **352 4940**

PAPANUI TOY LIBRARY

Closely located at 1 Harewood Road and open every Saturday from 10 - 12pm and Wednesdays from 7-8.45pm. For more information email papanuitoylibrary@hotmail.com or phone **3520 579**

NEW PROGRAMME FOR ELDERLY

The Christchurch North Elim Church and other local churches along with Belfast Community Network need volunteers from our community to provide companionship & activities for older people one day a week. A training and information day is on **Friday 18th October** with the programme beginning in February 2014 at St Luke's Community Centre. This programme is supported by Enliven Positive Ageing Services, Presbyterian Support. If you would like to be a part of this great programme for our older community members please contact Lynda at the BCN office on 323 9731 or email lynda@belfastcommunitynetwork.org.nz. A satisfactory police clearance will be required for all volunteers.

CRAFT GROUP

Thursdays 1pm at St David's, 829 Main North Rd Belfast - Embroidery, knitting, and other handcrafts. Bring your own work or learn a new skill. Ph **352 1366**

BELFAST GARDEN CLUB

We meet on the 4th Thursday of each month at 7.30pm at the Salvation Army! To know more please call Jan **359 3055**

HEALTHY EATING CO-OP

For \$10 you will get about 8kg fruit and veges. This is great value for your money. Order through Belfast Salvation Army **323 8257**

BELFAST BOWLING CLUB

Season Now Open - Situated in Sheldon Park on the Main North Road opposite the Z Service Station. Join today to enjoy a competitive and social atmosphere, everyone is welcome! Club Night is every Thursday with meals and full bar facilities available. Club rooms are also available for hire on approval of the House Manager. For more information please contact Murray Jones on ph: **3523 515** or visit www.belfastbowlingclub.co.nz

NEED SOMEONE TO TALK TO?

The Belfast Salvation Army is offering a **FREE** counselling service. Nyrene is a mature 2nd year degree student, with membership in NZAC. Nyrene is available Mon & Wed pm and 9-2.30pm Thursdays at our offices cnr Donegal Street and Main North Road. Please phone **974 1708** or txt **027 600 0093** to make an appointment.

DECEMBER 2013/JANUARY 2014 NEWSLETTER

Please have your submissions into the Belfast Community Network office by Wednesday 11th December 2013
info@belfastcommunitynetwork.org.nz

BCN SPONSORS

Valued sponsor of our vans.

BELFAST
AUTOMOTIVE
Ph 323 6336

Christchurch
City Council

NZ Lottery Grants Board
10 Puka Street
Distributor of NZ Lottery Profits

COGS
Community Organisation
Grants Scheme

NZCT
NZ COMMUNITY TRUST

The Canterbury
Community Trust
supporting you, supporting the Community

THE DEPARTMENT OF INTERNAL AFFAIRS
T. Tai Teitoku

First Sovereign
TRUST

ROTARY
INTERNATIONAL

the Southern
trust

Bendigo
Valley
Sports & Charity
Foundation
"Funding the Community"

BLUEGRASS
TRUST